

Eagle Point Nature News

Adventure Awaits....

www.epbrparks council.org



Winter 2024



Winter 2024 Edition

*Kathy Schwengler, Education & Outreach Coordinator,
Eagle Point-Blue Rapids Parks Council*

**There is no such thing as bad weather,
only bad clothes."**

We've been a bit remiss in keeping our Nature News up to date and we apologize! We've had a hectic schedule juggling Nature Education programs and Community Events.

Now that winter is here, we have a bit more time on our hands and we're able to put together a small winter edition for our subscribers, including a quiz to test your nature knowledge, 5 winter activities, great educational links and upcoming events!

5 WINTER ACTIVITIES FOR THE ENTIRE FAMILY!



1. GET A CLOSER LOOK AT ICE AND SNOW CRYSTALS

Head out to the trails on a frosty morning with a magnifying glass or your camera! Humid conditions in winter can create the most beautiful frosty crystals! **Find crystals on the surface of seed pods, spruce needles or moss** or collect snowflakes on a cold scarf. Getting a close look with a magnifying glass or the macro setting on your phone.

2. BRING NATURE INDOORS

When it's just too cold, bring out your collection of pine cones, feathers and rocks! Create an arrangement with your collection on your kitchen table. **Practice drawing or painting nature in the comfort of your home.**

3. KIDS COLLECT WEATHER INFO!



Kids! **Keep a weather journal!** Write down the coldest and warmest temperatures each day. Take a ruler outside after a snowfall and document the depth of a fresh snowfall. You can even calculate monthly averages to practice your math skills!

4. GO ON A HUNT FOR SIGNS OF WILD ANIMALS IN THE PARKS

How many types of animals live in our local parks? Ideally, this activity works after a fresh snowfall. Head out to a less travelled area for hiking and look for signs of animals - from **tracks and scat to nibbled shrubs to old nests and tree cavities to antler rubs!** The forest can reveal so much if you use your best observation skills.

5. GO ON A LICHEN HUNT!

Did you know that we have around 1100 species of lichens in Alberta? Some have cool common names, like **pixie cups, fairy puke or British soldiers.** Lichens are actually not a single organism, but a combination of fungi, algae and sometimes bacteria. They live in a symbiotic relationship and have unique traits (shape, colour, substrate, etc.). You can find lichens on tree bark, rocks, metal, rotting stumps, on the ground, on old fence posts, etc. Take a magnifying glass and see how many different types you can spot in our local forests.



Eagle Point Nature News

Adventure Awaits....

www.epbrparksCouncil.org

Upcoming Events in our Parks



**EAGLE POINT
BLUE RAPIDS**
parks council

Critter Christmas Scavenger Hunt

in
Eagle Point Provincial Park

December 19, 2024 to January 6, 2025


Can you find the clues hidden in the Park?

Head out to the Rotary-Pembina Nordic Community Trails South (aka Cemetery Trails) for a holiday hike with family and friends while learning about the local wildlife!

Find all twelve clues, decipher the clues and submit your answer for a chance to win a **Nature Themed Gift!**

Location: 7215 Twp 492, Drayton Valley, Alberta

Download instructions, maps and entry form at www.epbrparksCouncil.org/event/critter-christmas-2024/
Maps and entry forms are available at the trail head too!



**EAGLE POINT
BLUE RAPIDS**
parks council
presents


Introduction to Bushcraft & Outdoor Survival

SURVIVAL PSYCHOLOGY, TOOLS (KNIVES & SAWS, IMPROVISED TOOLS), FIRE, SHELTERS, WATER, FOOD, CORDAGE, FIRST AID, CLOTHING, LARGE ANIMAL AWARENESS, CLOTHING AND MORE.

February 8 and 9, 2025

Join instructor Russ Meades of Narrow Path at the Pembina Nordic Centre, Eagle Point Provincial Park for two days of outdoor survival skills!

For more information and to register, visit: www.epbrparksCouncil.org/events/




**EAGLE POINT-BLUE RAPIDS PARKS COUNCIL
and the TOWN OF DRAYTON VALLEY**

presents

FIRE & ICE FESTIVAL

**Saturday, February 15
4:00 pm to 8:00 pm**

At the Downtown Park across from
the Drayton Valley Civic Centre!

Featuring:

Fire & Ice Polar Plunge



Eagle Point Nature News

Adventure Awaits....

www.epbrparks council.org

What's your nature score for this quiz on Eagle Point-Blue Rapids Parks system?

This bird sticks around all winter and is often heard making a drumming noise to proclaim his territory and in the spring to let the females know where to find him. 10 points



- Huffed Grouse
- Prairie Chicken
- Partridge
- Ptarmigan

This shrub is prolific throughout Eagle Point Provincial Park and is a favorite of the local squirrels. They love the nut that is covered by a spiny outer shell. 10 points



- Saskatoon Bush
- Alberta Wild Rose
- Hazelnut
- Green Alder

What parks resident made these tracks in the snow? 10 points



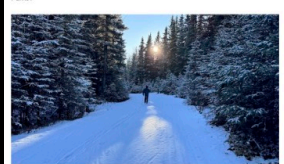
- Beaver
- Raccoon
- Canada Goose
- Red Squirrel

What 3 animals are you most likely to encounter in Eagle Point Provincial Park or Blue Rapids Provincial Rec. Area in the winter? 10 points



- Black Bear, Cougar, Snowshoe Hare
- Lynx, Cougar, Wolf
- Snowshoe Hare, Deer Mouse, Pine Martin
- Coyote, White-tailed Deer, Red Squirrel

What type of ecosystem is dominant in Eagle Point-Blue Rapids Provincial Park? 10 points



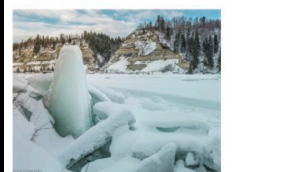
- Parkland
- Foothills
- Rocky Mountains
- Boreal Forest

Which answer best describes activities that can be done in Eagle Point Provincial Park in the Winter? 10 points



- Cross Country Skiing, Bird Watching, Canoeing
- Bird Watching, Snowshoeing, Cross country Skiing
- Flower Identification, hiking, Archery
- Archery Horseback riding, Geocaching

Eagle Point Blue Rapids Parks are located along what River? 10 points



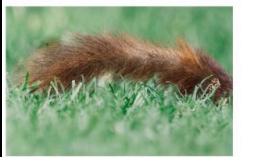
- North Saskatchewan
- Pembina
- Macleod
- Athabasca



Most trees can be identified by their bark. What kind of tree is in the photo above? 10 points

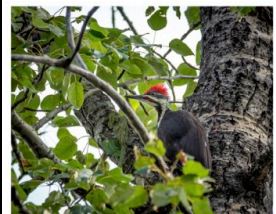
- Balsam Poplar
- Trembling Aspen
- Paper Birch
- Lodgepole Pine

Who belongs to this animal part? 10 points



- Red Fox
- Chipmunk
- Coyote
- Red Squirrel
- Other:

What is the name of the woodpecker with the bright red head? 10 points



- Tapscupper
- Black Backed Woodpecker
- Pileated Woodpecker
- Hairy Woodpecker

- Answers:
1. Ruffed Grouse
 2. Hazelnut
 3. Red Squirrel
 4. Coyote, White Tailed Deer, Red Squirrel
 5. Boreal Forest
 6. Bird Watching, Snowshoeing, Cross-country Skiing
 7. North Saskatchewan
 8. Trembling Aspen
 9. Red Squirrel
 10. Pileated Woodpecker



What kind of scat is this?

- a. Snowshoe Hare
- b. Boreal Chickadee
- c. Spruce Grouse
- d. Porcupine

b. Spruce Grouse



Visiting our two Parks this winter?

Show us what you love about our Parks with your photographs by tagging us at [#iloveEPBRParks](https://www.instagram.com/iloveEPBRParks)

Eagle Point Nature News

Adventure Awaits....

www.epbrparkscouncil.org



Winter 2024

Questions or Suggestions?

Eagle Point-Blue Rapids Parks Council

Sandra Bannard

Executive Director

sandra@epbrparkscouncil.org

Kathy Schwengler

Education & Outreach Coordinator

outreach@epbrparkscouncil.org

Rita Fowell

Nature Educator

rita@epbrparkscouncil.org

Tawnya Dooper

Finance & Administration

finance@epbrparkscouncil.org

Jenn Budd

Marketing & Tourism Specialist

jenn@epbrparkscouncil.org

VISIT OUR PLATFORMS:

www.epbrparkscouncil.org

[EPBR Parks Council on Facebook](#)

[EPBR Parks on Instagram](#)

[Parks Council on Youtube](#)

[Subscribe to Eagle Point Nature News](#)

[SUBSCRIBE TO
NATURE NEWS](#)



KEYERA

Eagle Point-Blue Rapids Parks Council thanks our supporters for their continued support of our Nature Education programs!

Keyera is our featured supporter for the Winter 2024 Edition.

Links to Further Learning/Exploring!

- ❖ [PEMBINA NORDIC CLUB](#) Winter is a great time to join our local nordic ski club! Get access to over 25 km of trails, groomed throughout the winter. They also have trails for snowshoeing, walking or mountain biking.
- ❖ [Geocaching.com](#) Get your steps in with Geocaching! A worldwide, year round scavenger hunt and it's free! Many geocaches are accessible in the winter months.
- ❖ [Feeding Birds in Alberta](#) Hanging up a seed feeder or a suet bar to attract winter birds will bring some of Alberta's winter birds to you! Check out this article on bird feeders.
- ❖ [Explore the Wondrous World of Alberta's lichens with the Alberta Biodiversity Monitoring Institute.](#)